

NOVA *compact*

THE ULTIMATE RUGGED AND COMPACT ANALYZER FOR PROFESSIONALS



O₂

CO

CO₂

NO

NO_x

°F

Δ°F

ΔP

Draft

Pres-
sure



since 1984 ®

AIR fair

EMISSION MONITORING SYSTEMS

Over 30 years of innovative gas analysis!

- Low cost of ownership
- Extremely user friendly
- +4 Years O₂ sensor Life Expectancy
- Active CO sensor protection
- Rugged aluminum transport case

FOR PROFESSIONALS

who are looking for an extremely compact and rugged analyzer
Equipped with everything needed for daily checks for combustions
of all kinds - Intuitive and user-friendly

MRU online View Software for trending and data export



Measurement values per customizable screen

Program 1, Natural gas	
O2	2.0
CO2	10.7
CO	> 500
NO	30
NO2	3
NOx	33
Stop	Done
[-] keyboard	

Built in high speed printer



OPTIONAL gas cooler



OPTIONAL CO sensor protection NOx | SOx filter



Simultaneous measurements of up to 4 gas components!

- O₂, CO, CO₂, NO, CO-high, & CO-very high,
 - Up to 4 electrochemical sensors
 - Low CO and NO ranges are available
- Gas temperature measurement up to 2,012°F (use stainless steel up to 1,200°F, use Inconel tubes up to 2,012°F)
- Large condensate separator with PTFE (Teflon) coated filter
- Air purging pump for CO-sensor protection
- Internal data storage for up to 16,000 measurements!
- High energy Li-Ion battery (up to 15 hours operation time)
- Color backlit 3.5" TFT display with zoom function
- Customizable screen settings
- Durable and dirt resistant keypad
- Built in high speed printer
- Integrated SD card reader for additional data storage and data transfer to PC

Also measures...

- Combustion air temperature
- Stack gas temperature
- Stack draft
- Differential pressure
- Differential temperature

And calculates...

- CO₂
- CO/CO₂ ratio
- Dew point
- Excess air and air ratio (Lambda)
- Combustion efficiency
- Heat losses

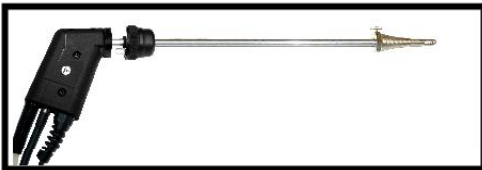
DON'T COMPROMISE ACCURACY FOR PORTABILITY!

The NOVAcompact gives you the best of both!

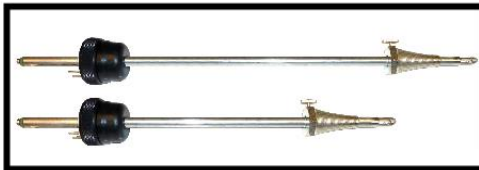
PROBES AND PROBE TUBES



Standard probe: 10" insertion; 7.2' rugged sampling line with K-Type t/c (1,200°F max) and silicone hose for combustion applications



Industrial probe for interchangeable probe tubes with 7.2' or 16' rugged, braided sheathed sampling line with K-Type t/c and Viton hose for combustion and emission measurements

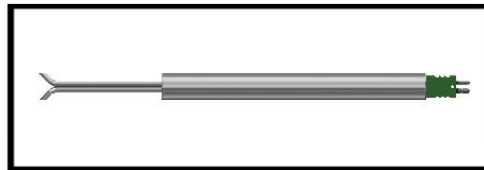


Probe tubes (4" to 80" long) in SS (1,200°F) or Inconel (2,000°F) Also available with sintered metal filter

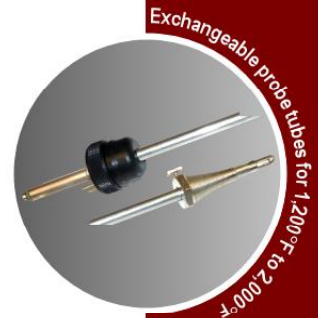


L-Type SS with or without K-Type t/c In sizes from 4" (0.12Ø) to 79" (0.47 Ø)

PITOT TUBES



S-Type SS with K-Type t/c (59" lead) and 1.1"Ø protection tube Available in 19" or 39" lengths (0.31"Ø)



Exchangeable probe tubes for 1,200°F to 2,000°F



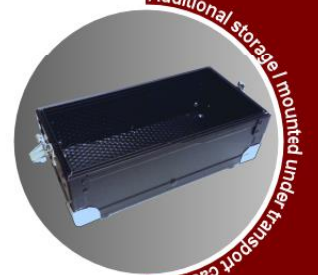
Sintered metal filter



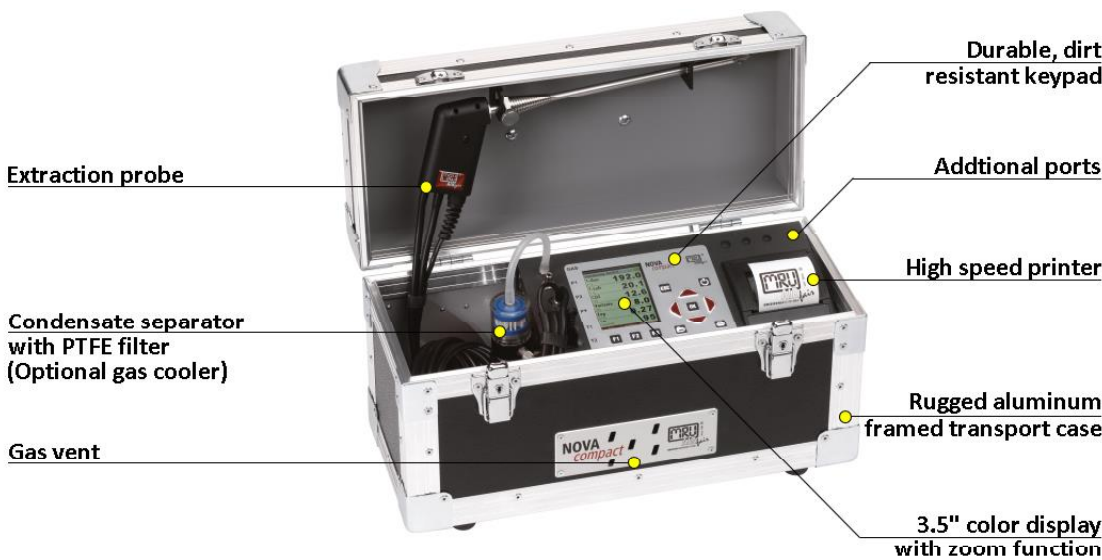
HC leak detection probe (requires AUX output option)



Rugged, aluminum framed transport case



Additional storage | Mounted under transport case



Extraction probe

Condensate separator with PTFE filter (Optional gas cooler)

Gas vent

Durable, dirt resistant keypad

Additional ports

High speed printer

Rugged aluminum framed transport case

3.5" color display with zoom function

NOVA compact

TECHNICAL SPECIFICATIONS

NOVAcompact analyzer	Portable analyzer with up to 4 electrochemical sensors
Fuel types	Natural gas, liquid gas, oil light, pellets, wood, coal, and user definable fuels

Measurement components	Measuring range	Accuracy
O2 Oxygen	0 ... 21.0 Vol-%	± 0.2 Vol-% abs.
CO Carbon monoxide (H2 compensated)	0 ... 4,000 ppm overload 10,000ppm *	± 20 ppm or 5 % reading < 4,000 ppm / 10 % reading > 4,000 ppm
CO Carbon monoxide low	0 ... 500 ppm with 0.1 ppm resolution **	± 2.0 ppm or** 5 % reading
CO Carbon monoxide high	0 ... 4,000 ppm overload 20,000ppm *	± 20 ppm or 5 % reading < 4,000 ppm / 10 % reading > 4,000 ppm
CO Carbon monoxide very high	0 ... 40,000 ppm overload 100,000ppm *	± 0.02% or 5 % reading < 0.4% / 10 % reading > 0.4%
NO Nitric oxide	0 ... 1,000 ppm overload 5,000ppm *	± 5 ppm or 5 % reading < 1,000 ppm / 10 % reading > 1,000 ppm
NO Nitric oxide low	0 ... 300 ppm with 0.1 ppm resolution **	± 2.0 ppm or** 5 % reading

*overload range recommend only for short time measurements

**are not separate sensors; selected sensors are used with special calibration

Stack / Flue gas temperature	0 ... 1,200°F / 2,012°F (with stainless steel / Inconel steel tube)	± 4°F ... < 392°F / 1 % reading > 392°F
Primary-air / Ambient temperature	0 ... 212°F	± 2°F
Differential temperature	up to 2,012°F (with suitable material of sampling tube)	± 4°F ... < 392°F / 1 % reading > 392°F
Stack / Differential pressure	+/- 40 inH2O (100hPa)	
Gas flow velocity measurement	1 ... 40 m/s (using Pitot tube)	

Calculated values (fuel type dependent)

Carbon dioxide	0 ... CO2 max.	Air Ratio (Lambda)	1 ... 9.99
Heat losses qA	0 ... 99.9 %	Excess Air	0 ... 99.9
Efficiency	0 ... 100 % / 120 %	CO/CO2 ratio	0 ... 10

General specifications

Operation temperature	41°F 113°F, max. 95 % RH, non condensing
Storage temperature	-4°F 122°F
Ambient conditions	not in aggressive, corrosive or high dust environments, not for use in hazardous areas
Power supply	Lithium-Ion battery, 10 h operation, (with gas cooler 2 ... 3 h)
Grid power supply	100 - 240 Vac / 50 ... 60 Hz / 60 W
Weight	approx. 15lbs (6.8 kg)
Dimensions	16.65" x 9.45" x 6.93" (W x H x D) 423 x 240 x 176 mm

Data subject to change without notice

MRU Instruments, Inc.
Humble, Texas 77338
Tel.: (832) 230 - 0155
Fax: (832) 230 - 1553
info@mru-instruments.com
www.mru-instruments.com

Support and sales by:

